

BASSETLAW HEALTH & SOCIAL CARE WORKFORCE



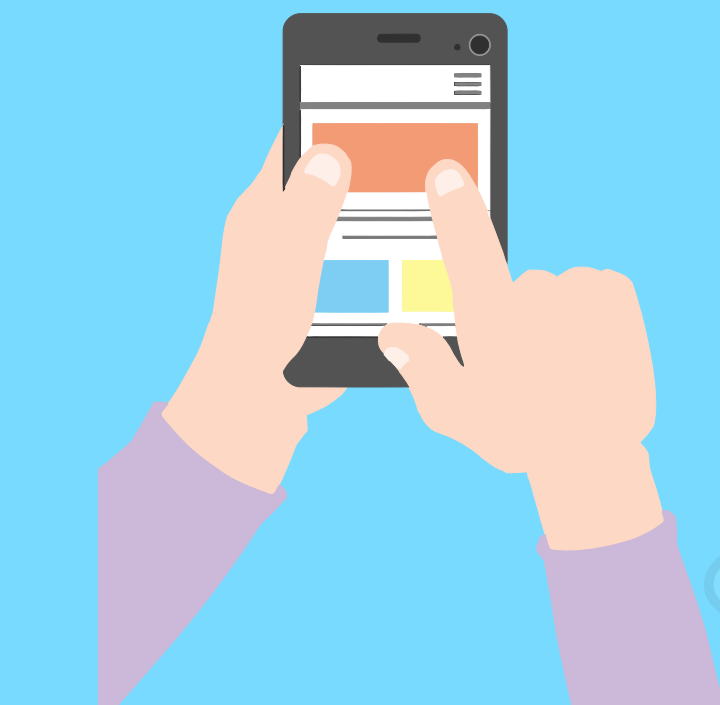
#3

HEALTH AND SOCIAL CARE IS THE THIRD LARGEST EMPLOYER WITHIN BASSETLAW



8K

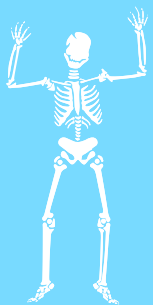
THE SECTOR EMPLOYS MORE THAN 8,000 STAFF
AROUND 17% OF THE REGION'S WORKING POPULATION.



ONE OF THE FASTEST GROWING SECTORS



HEALTH AND SOCIAL CARE IS ONE OF THE FASTEST GROWING JOB SECTORS IN THE UNITED KINGDOM, WITH NEW AND EXCITING ROLES BEING CREATED ALL THE TIME.



DID YOU KNOW THERE ARE OVER 350 CAREERS IN THE SECTOR? INCREASING OPPORTUNITIES IN: NURSING, CARE MANAGEMENT, THERAPEUTIC RADIOGRAPHY, SOCIAL PRESCRIBING, OCCUPATIONAL THERAPY, BUSINESS ADMIN, SUPPORT WORK, COUNSELLING, HOUSEKEEPING, SOCIAL WORK, MEDICINE, MUSIC, ART, AND DRAMA THERAPY.

CHECK OUT...

www.syrexcellencecentre.co.uk

www.stepintothenhs.nhs.uk

www.Bassetlaw.gov.uk/job-vacancies

www.jobs.nhs.uk

www.healthcareers.nhs.uk



HEALTH & SOCIAL
CARE
CAREERS!

SYREC

